

## Canturf Lawn Seed/ Fertilizers

PRODUCT	PER BAG
Hardy Green or Rough and Tumble 0.5kg bag	\$10.00
Hardy Green or Rough and Tumble 2kg bag	\$23.00
Hardy Green or Rough and Tumble 4kg bag	\$38.00
Grow Green Lawn Fertilizer 3kg Bucket	\$15.00
Grow Green Lawn Fertilizer 7kg Bucket	\$25.00
Grow Green Lawn Fertilizer 20kg bag	\$46.00
Lawn Starter 3kg Bucket	\$17.00

## Cement/ Lime

PRODUCT	PER BAG
General Purpose Cement	\$9.00
Rapid Set	\$9.00
Sand and Cement	\$9.00
Concrete Mix	\$9.00
Off White Cement	\$11.00
Lime	\$11.00

## Bycol

PRODUCT	EACH
Brickies Own 1 Litre Concentrate (1 litre = 20 litres)	\$25.00

## Firewood – When Available

Firewood	\$275.00 per tonne (Pickup Only)
----------	----------------------------------

## Delivery Charges Monday - Saturday

1-5m<sup>3</sup> - \$60.00

Over 5m<sup>3</sup> – 12.00 per m<sup>3</sup>

Cement & Lime Deliveries \$1.00 extra per bag

**\*MINIMUM CHARGES APPLY TO ALL PRODUCTS\***

# **CORKHILL BROS**

## Landscape supplies

Find us on the web

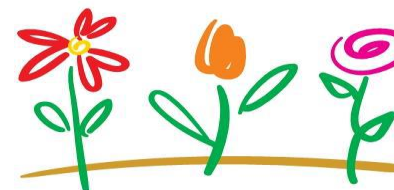
[www.corkhillbros.com.au](http://www.corkhillbros.com.au)

## OPEN 7 DAYS

**33 Darling Street  
Mitchell**

**Monday – Saturday: 7am – 5pm  
Sunday and Public Holidays: 8:30am – 4pm**

**Phone: 6241 8860**



## Composts/Soils

PRODUCT	1/4m <sup>3</sup>	1/2m <sup>3</sup>	3/4m <sup>3</sup>	1m <sup>3</sup>
Super Soil	\$22	\$32	\$37	\$43
Vegi Mix	\$23	\$33	\$38	\$48
Garden Mix	\$23	\$33	\$38	\$48
Cow Manure	\$22	\$42	\$62	\$72
Mushroom Compost	\$22	\$42	\$62	\$72
Potting Mix	\$30	\$50	\$70	\$90

## Mulches – Minimum of 1/2 m<sup>3</sup>

PRODUCT	1/2m <sup>3</sup>	1m <sup>3</sup>
Forrest Litter Fine and Coarse	\$16	\$24
Red Flake	\$35	\$45
Euci Chip	\$43	\$68
Tan Bark 10mm, 14mm & 25mm	\$39	\$62
Red Chip	\$56	\$86
Hardwood Chip	\$40	\$60

## Sands

PRODUCT	1/4m <sup>3</sup>	1/2m <sup>3</sup>	3/4m <sup>3</sup>	1m <sup>3</sup>
Red/White Brickies Sand	\$22	\$32	\$42	\$52
Paving Sand	\$22	\$32	\$42	\$52
Washed Sand	\$22	\$32	\$42	\$52
Braidwood Plastering Sand	\$28	\$48	\$68	\$78

Beach Sand Available - \$97 .00 per tonne (\$136.00 per m<sup>3</sup>)

## Granites

PRODUCT	1/4m <sup>3</sup>	1/2m <sup>3</sup>	3/4m <sup>3</sup>	1m <sup>3</sup>
Ginninderra Red Granite	\$29	\$49	\$69	\$79
Yellow Granite	\$29	\$49	\$69	\$79

## Gravels

PRODUCT	1/4m <sup>3</sup>	1/2m <sup>3</sup>	3/4m <sup>3</sup>	1m <sup>3</sup>
Roadbase	\$24	\$34	\$49	\$54
Blue Dust	\$24	\$34	\$49	\$54
Round River Gravel	\$24	\$34	\$49	\$54
Sand & Gravel Mix	\$23	\$38	\$48	\$58
Crushed Blue Metal	\$24	\$40	\$51	\$62

## Gravel/Wall Rocks per tonne

PRODUCT	PER TONNE
White Gravel 20mm & 40mm	\$195
Crushed Brick 10mm	\$70

## Bagged Products

PRODUCT	PER BAG
Cow Manure	\$8.00
Garden Mix	\$8.00
Mushroom Compost	\$8.00
Potting Mix	\$10.00
10mm & 14mm Tan Bark	\$10.00
Euci Chip	\$10.00
Coarse Forrest Litter	\$10.00
Gypsum	\$11.00
Sugar Cane Mulch	\$15.00
Organic Advance Plus	\$26.00